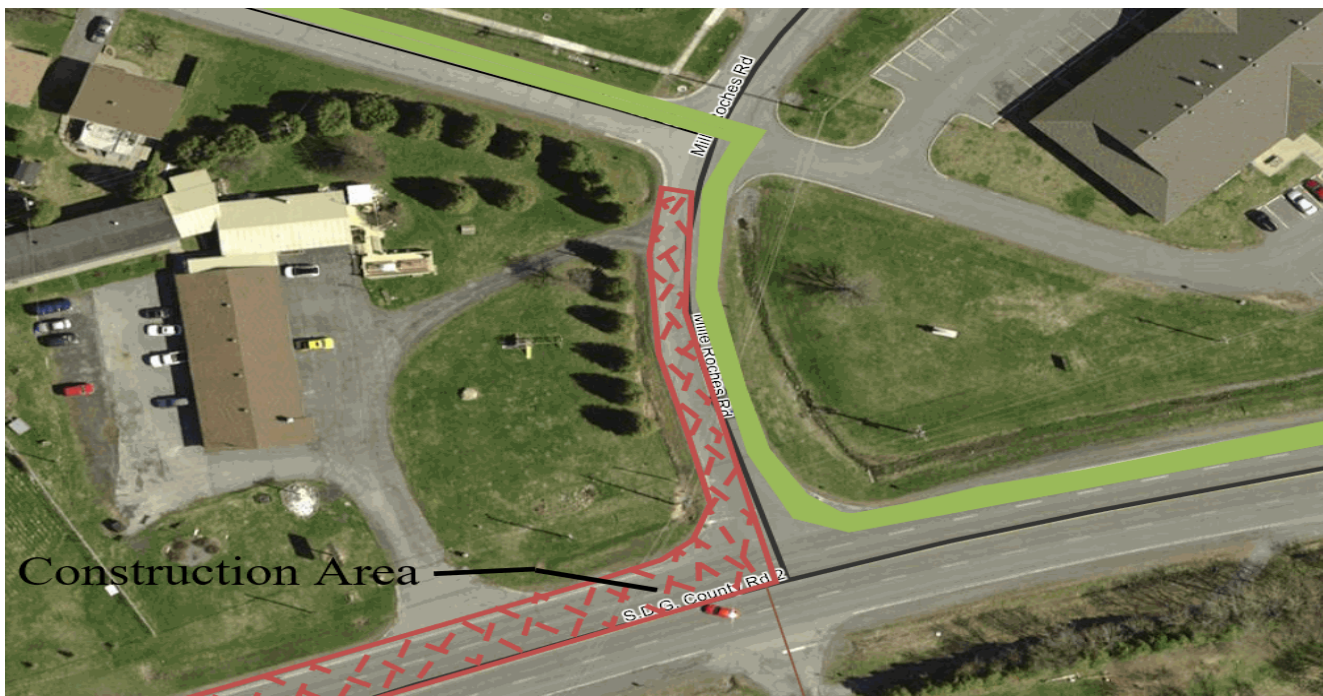


## Temporary Road Closure on county Road 36 (Milles Roches Road)

Due to a conflict with a utility pole scheduled to be relocated, the County is, unfortunately, required to implement a short-term detour starting as early as October 19, 2017 for installation of the concrete curbing at the intersection of County Roads 2 and Milles Roches Road. Eastbound traffic will continue to travel on County Road 2. Westbound traffic will be detoured north on Milles Roches Road to Simcoe Street, west on Simcoe Street to Moulinette Road, and south to County Road 2. The expected duration of the detour is two to three weeks. To assist with potential congestion along this detour route, the County will be posting no parking signage on Simcoe Street. Motorists, cyclists, and pedestrians can expect delays during this time.

Signed detour routes will be in place. If you should require any additional information, please contact the Counties at 613-932-1515, Ext 3.



Please accept our apologies for any inconvenience this roads closure may cause.

What does the Counties do for you? **SDG provides** library services, regional economic development, court services, land use planning, and vital transportation infrastructure – including the largest county road network in Ontario. **SDG administers** county-wide policing. **SDG collaborates** with community partners in providing emergency services, child care, public health, long-term care, and social assistance.

**Contact:**  
Corporate Communications  
United Counties of Stormont, Dundas and Glengarry  
613-932-1515 ext. 331  
edco@sdgcounties.ca  
**SDGcounties.ca**